

redeia

Valuing the essentials



Electricity



Connectivity



Innovation

redeia

Global operator of essential infrastructures.

A driver of the energy transition and universal connectivity.

It operates the Spanish electricity system and manages electricity and telecommunications networks (fibre optics), with a focus on innovation and sustainability.

red eléctrica

Backbone of the energy transition, ensuring a secure, high-quality, and increasingly renewable electricity supply.

reintel

Spain's leading dark fibre provider, essential for universal connectivity.

redinter

The driving force behind the decarbonisation of the energy model and sustainable development in Latin America.

elewit

A technology innovation platform driving the energy transition and connectivity.

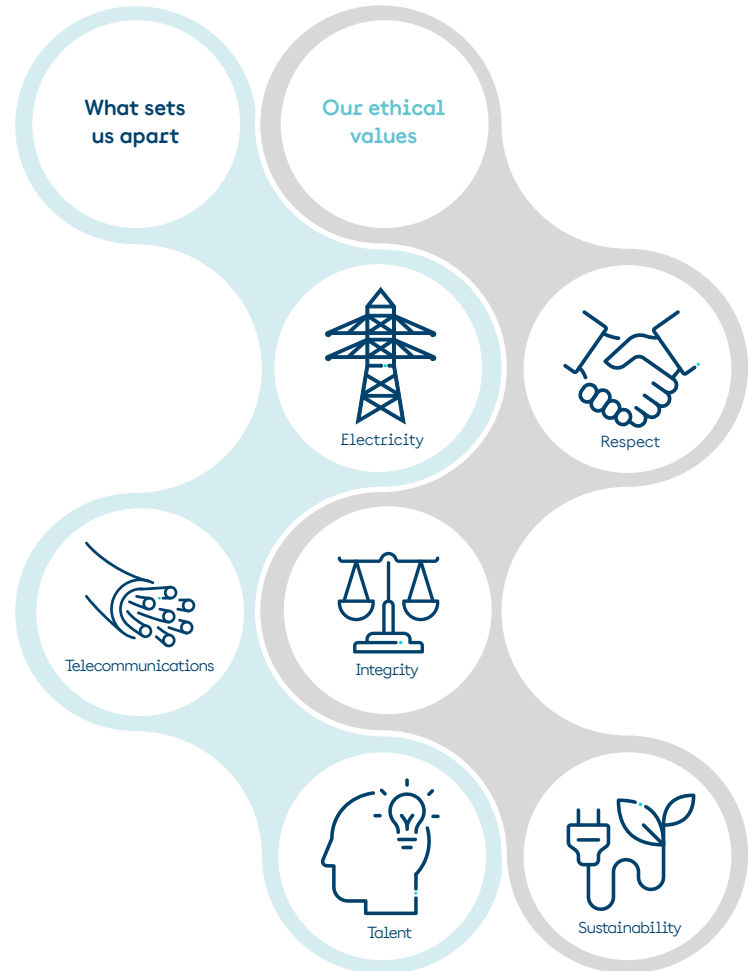


Redeia in the world
 ● España, Perú, Chile and Brasil

Redeia operates with a focus on innovation and sustainability, ensuring that its activities are consistent with protecting the environment and creating shared value with society.

Redeia's mission

To ensure electricity supply and connectivity, promoting a green and just transition based on the principles of sustainability, contributing to social and regional cohesion and the development of the industrial base, and facilitating the electrification of the economy.



A cutting-edge corporate governance model

Redeia has a robust and transparent corporate governance system that adopts best practices and international recommendations, and constitutes a strategic element to ensure the good governance of the company.

Governance structure

General Shareholders' Meeting

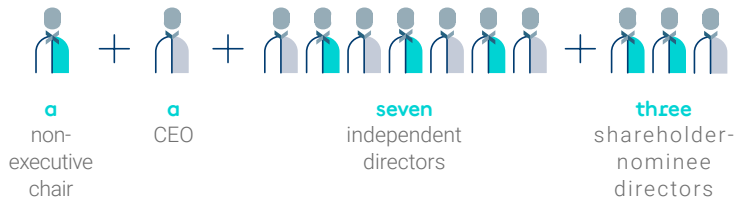
Board of Directors

- Audit Committee
- Appointments and Remuneration Committee
- Sustainability Committee

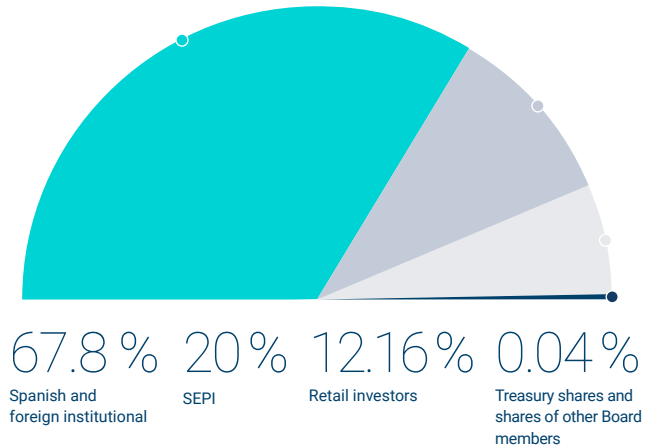
Management team

A diverse, balanced and efficient Board

(6 women and 6 men)

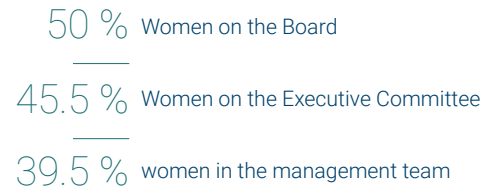


Ownership structure / 2025



Committed to gender equality

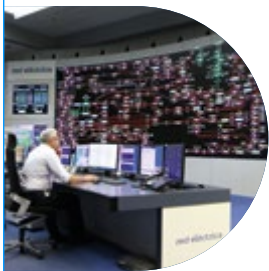
Redeia: one of the five IBEX 35 companies chaired by a woman



red eléctrica

Sole Transmission Operator and Transmission System Operator (TSO)

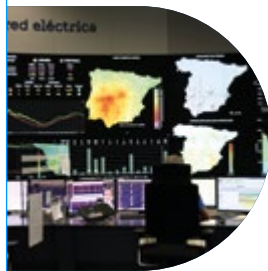
Red Eléctrica, as the transmission system operator (TSO), operates the Spanish power grid and transmits electricity at high voltage. It is also responsible for the design, construction and maintenance of the power transmission grid.



CECOEL

The electricity control centre (CECOEL) ensures the smooth operation of the power grid, keeping electricity generation and consumption constantly in balance in real time.

We operate the power grid 24 hours a day, 365 days a year.



CECRE

The CECRE is a world-leading centre that enables the safe integration of the maximum possible amount of renewable energy into the electricity grid.



Transmission grid

A network of power lines and substations that connect electricity generation to distribution points serving consumers, and that interconnects the Spanish grid with those of its neighbouring countries.

2025 Electricity system data



National electricity demand (including self-consumption)

269.6 TWh



Installed capacity in Spain

150.8 GW



Installed renewable power

68.9 % of the total



Renewable generation (including self-consumption)

56,6 % of the total



Power generated with zero CO₂ emissions

74.5 %



CPower lines in Spain

46,074 km

reintel

The largest supplier of dark fibre in Spain

A key player in the roll-out of universal connectivity, through the implementation of an extensive interconnected network of dark fibre and technical housing, deployed across the electricity transmission grid and the rail network.

Reintel in figures (2025)



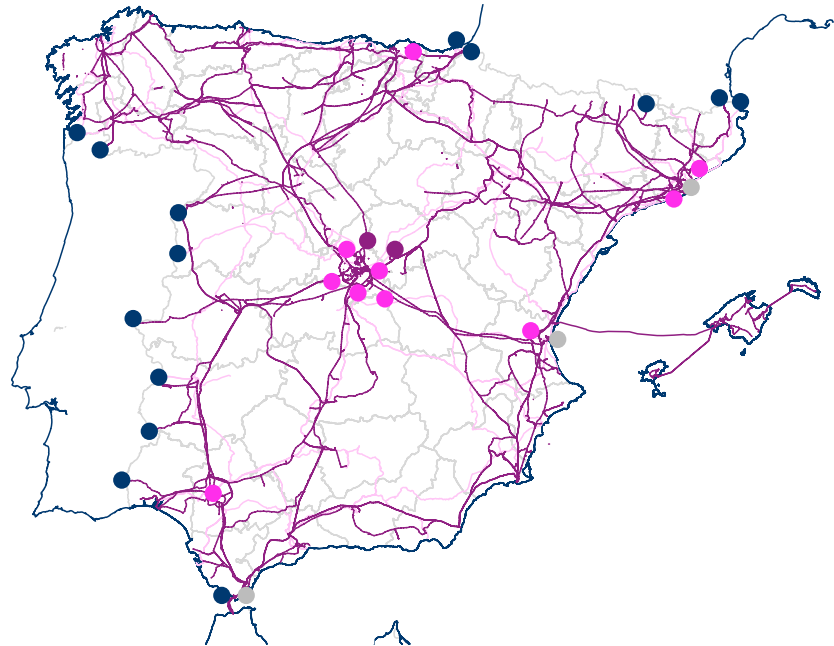
54,777 km fibre-optic grid
45 interconnections



1,457 housings
923 electric
534 railway



50 provinces covered



- International interconnections
- Data centres
- Data centres under development
- Submarine cables

redinter

Electrical infrastructure in Latin America

Redinter has been involved in building and operating power transmission networks in Latin America for over 25 years. It currently operates in Peru, Chile and Brazil.

Its mission is to guarantee the security and continuity of the electricity supply at all times and develop a reliable transport network that contributes to sustainable development in Latin America.



1,691 km

Perú
The country's third-largest transmitter



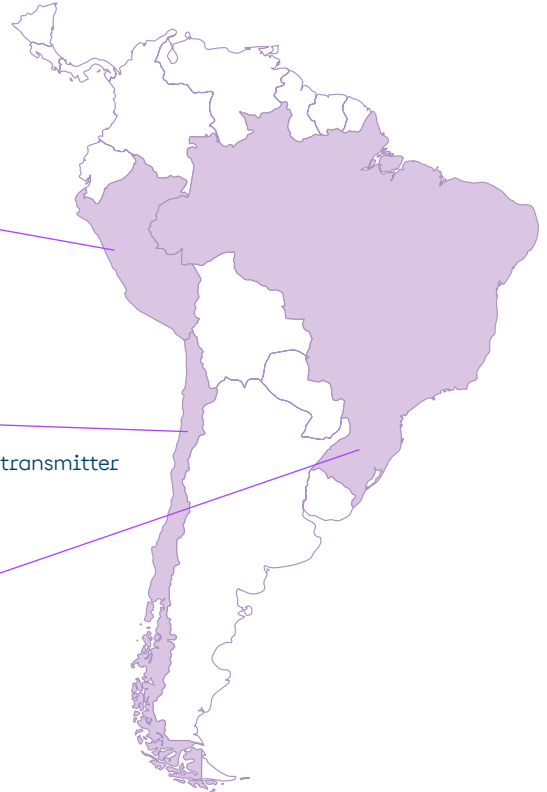
1,773 km

Chile
The country's fifth-largest transmitter (including 50 % of TEN)



4,209 km

Brasil
The country's fifth-largest transmitter (Argo)



elewit

Redeia's technology platform

We act as catalysts for internal innovation at Redeia and harness external talent and the potential of new technologies to develop innovative solutions in the fields of electricity and connectivity.

Our ecosystem:

+165 partners and associates.

6 editions of the
Venture Client

10 investee companies
+ 3 funds

6 editions of the
Intrapreneurship programme

2 new ventures established

Innovation ecosystem

Networking with other corporations, companies, institutions and stakeholders in the innovation ecosystem.

Corporate Venture Capital

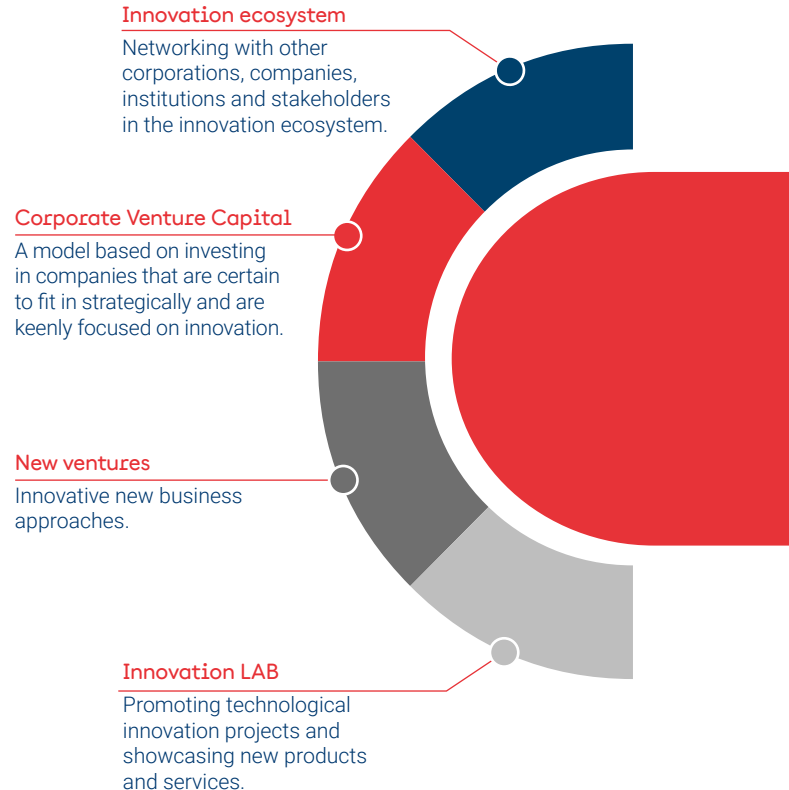
A model based on investing in companies that are certain to fit in strategically and are keenly focused on innovation.

New ventures

Innovative new business approaches.

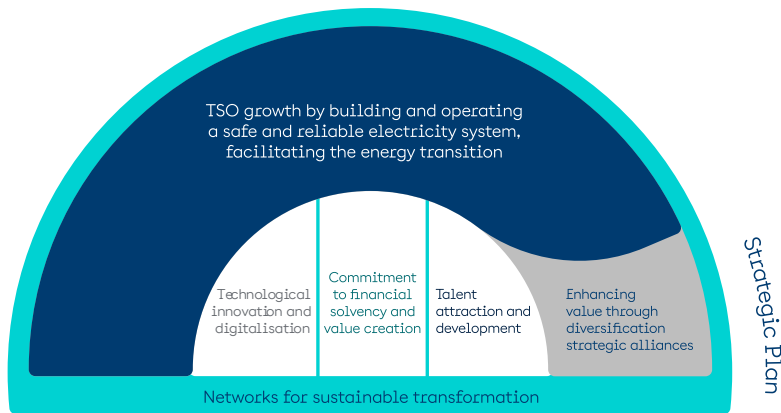
Innovation LAB

Promoting technological innovation projects and showcasing new products and services.



Strategic plan 2026-2029

The company's most ambitious strategic plan to date, featuring a record level of investment.

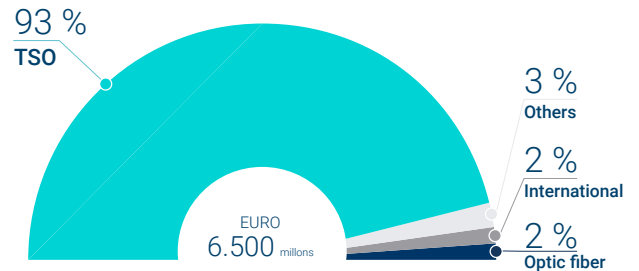


Boosting profitability for shareholders

The dividend will grow by **2%** annually over the period up to **EUR 0.87 per share** in 2029.

Record levels of investment

Over 90 % of the investments are allocated to the TSO to implement the 2025–2030 Electricity Plan, manage the grid and operate the electricity system, ensuring the quality and security of supply.







Investment in the growth of the TSO

A **70 %** increase in average annual investment compared with the previous plan.

2025-2030 electricity planning (proposed)

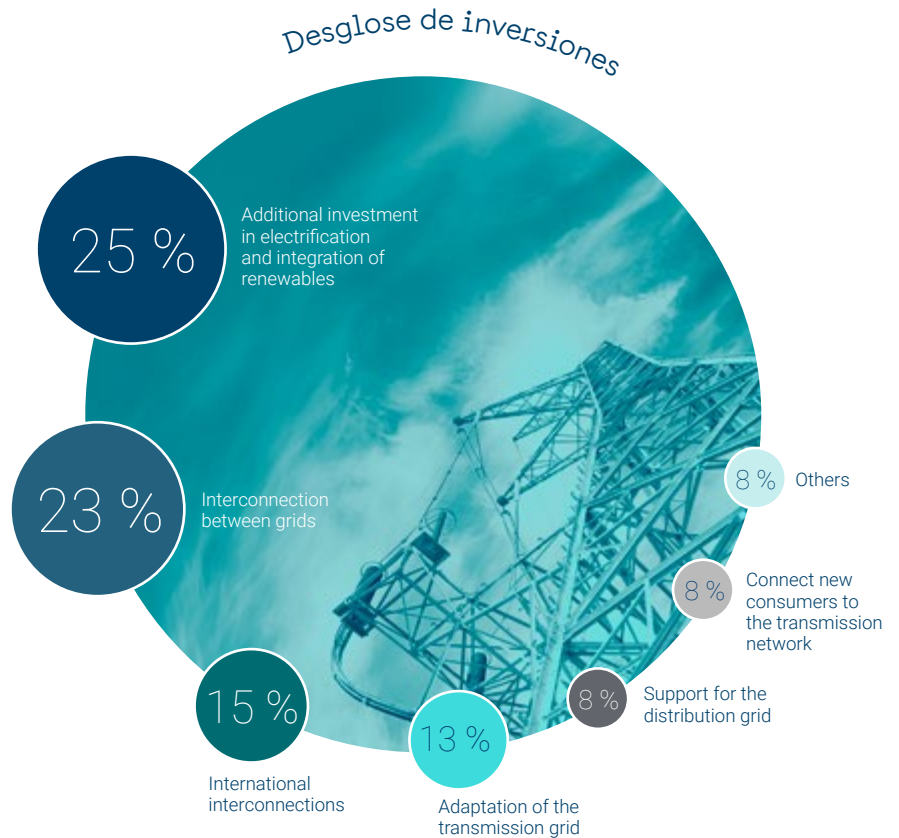
Sets out the TSO's investment plans for the coming years, with an unprecedented total of over EUR 13,000 million.

Guiding principles

-  Maximise the use of the existing grid.
-  Roll-out new renewable energy facilities.
-  Connect new consumers, electrify the economy and the island grids, and strengthen international interconnections.
-  Strengthen the resilience and security of the grid.

Investments of the TSO

The investments for the period 2026–2029, together with those made in 2025 and those planned for 2030 and 2031, will ensure that the new electricity plan is either completed or underway by 2031.



Sustainability Plan 2026-2029

Networks for sustainable transformation.

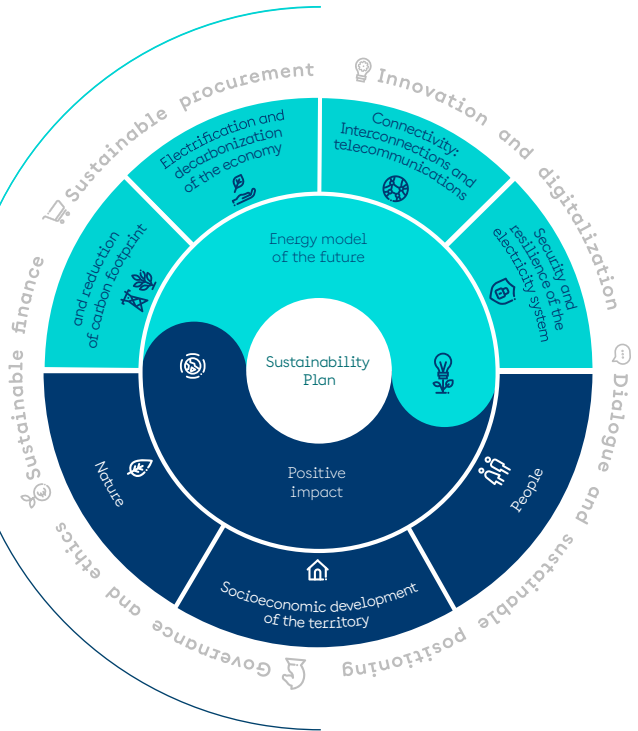
The new plan focuses on two key objectives: the sustainable transformation of the energy model and the creation of a net positive impact, delivering value to people, communities and nature.



The energy model of the future

Management levers

Generating a positive impact



Sustainability Plan 2026-2029

THE ENERGY MODEL OF THE FUTURE



Sustainable infrastructure and reduction

Net Zero by 2050.
24.5% reduction in SF6 emissions compared with 2015.
30% of fuel consumed from renewables.
Design, construction and maintenance in accordance with eco-design and social criteria.



Electrification and decarbonisation of the economy

Facilitating greater electrification and decarbonisation of the economy and integrating renewable energy sources into the system safely and efficiently, ensuring proper grid connection and management.



Connectivity: interconnections and telecommunications

Working toward universal connectivity in a flexible, secure and robust manner, both in terms of implementing electricity interconnections and rolling out telecommunications.



Safety and resilience of the electricity system

Ensuring the safety, resilience and reliability of the electricity system, while strengthening the organisation's capacity to respond to incidents and emerging challenges.

POSITIVE IMPACT



Nature

Net positive impact.
0 serious environmental accidents.
0 waste sent to landfills.



Socio-economic development of local communities

Consolidating Redeia as a driving force for change in local communities, making a positive contribution to their development and generating environmental, social and economic.



People

Zero-accident culture.
Level of well-being > 20 % of market value.
Promoting diversity.
40 % - 60 % of senior management roles held by women.

PALANCAS DE GESTIÓN



Governance and ethics

Best practices in corporate governance, ethics, compliance and risk management.



Sustainable finance

90 % sustainable financing.



Sustainable procurement

Incorporating sustainability criteria into procurement processes.



Innovation and digitalisation

Promoting digitalisation and technology in key activities.



Dialogue and sustainable positioning

Ranking in the 90th percentile or higher from the leading rating agencies (S&P, Sustainalytics, ISS-ESG, FTSE4Good, MSCI and CDP).
Overall average perception of very high and high priority stakeholders of 8 or higher.

Integrated Impact Strategy

In 2025, the Integrated Impact Strategy invested EUR 6.7 million in local communities. The Integrated Impact Committee has approved a total of 98 initiatives, generating a positive economic impact of EUR 83.2 million for local communities.

Redeia's Integrated Impact Strategy (EIIR) aims to maximise the creation of shared value with the local communities where its facilities are located, with a view to generating a net positive impact on society and the environment.

Commitment to local communities

EUR 20 million

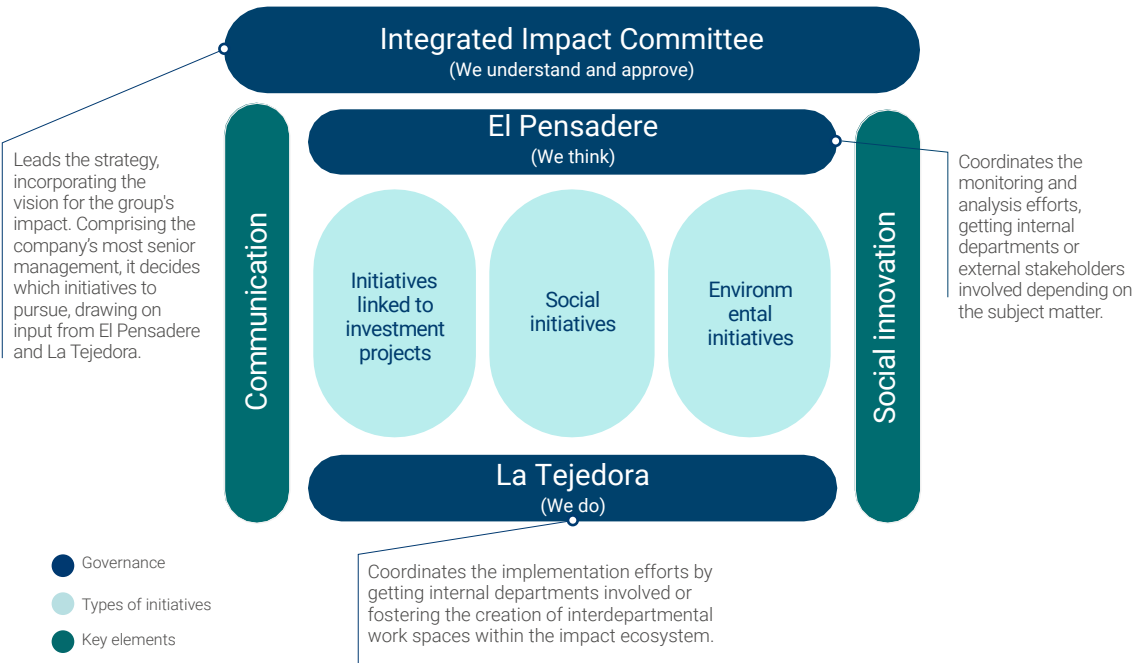
Investment approved since 2022

261

Investment approved since 2022

EUR 161 million

Social impact generated since 2022



Integrated Impact Strategy

Important projects

Red activa (Active grid)

360° communication project to highlight the real impact of the initiatives under the Integrated Impact Strategy, told through the personal stories of the beneficiaries of these initiatives.

Bosque de Redeia (Redeia Forest)

A project to offset part of the company's emissions through planting trees and restoring degraded natural areas, to contribute to the conservation of biodiversity.

Plataforma bosque marino (Marine forest platform)

A strategic initiative to promote the conservation of marine ecosystems through scientifically validated restoration projects and environmental awareness and education activities.

Reflections on impact

White Paper on Forests

A reflection on the relationship between forests and the electricity sector in the current context of climate change and global biodiversity loss, identifying the key links between forests and electricity transmission.

Social Innovation Plan 2026-2029

We work for the social transformation of local communities and to reduce inequalities.



Cross-cutting areas
These ensure alignment with the Integrated Impact Strategy, and the business objectives and sustainability goals.

Specific areas
Focused on specific issues that drive the local community forward and support its people.

redeia

Valuing the essentials

red eléctrica reintel redinter elewit

www.redeia.com